



Heather Ennis
President & CEO

We Are:

- ❖ The Voice of Northwest Indiana Business
- ❖ Market Northwest Indiana as THE place to do business
- ❖ Stake out and drive **Bold** initiatives



READY to IGNITE

THE REGION

Northwest Indiana's Strategy for Economic Transformation



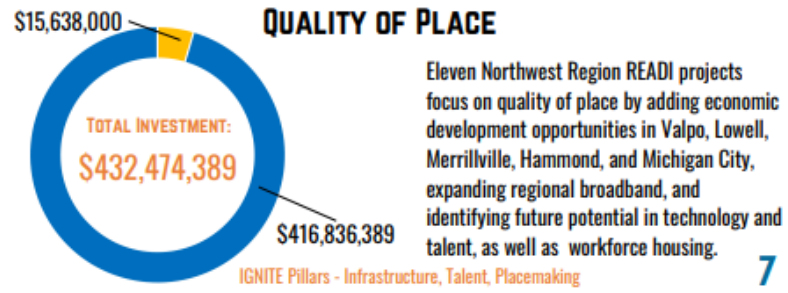
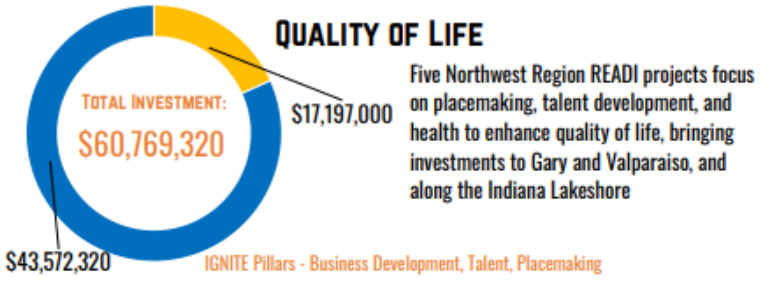


READI

REGIONAL ECONOMIC ACCELERATION
& DEVELOPMENT INITIATIVE

Total Investment **READI Dollars** **Leverage Dollars**
\$708.29 MILLION **\$50 MILLION** **\$658.29 MILLION**

Total Investment **READI Dollars** **Leverage Dollars**



\$50 Million READI 1.0 Award

42 Projects

\$700+ Million of Cash Investment

Billions of Dollars of Generational Impact

What's Next?

13 WTHR

Biden designates 31 new Tech Hubs across the US, and 2 of them are in Indiana

INDIANA, USA – The Biden-Harris administration announced the designation of 31 Tech Hubs nationwide on Monday, two of which are in Indiana.

1 week ago



 IndyStar

Feds give Indiana, other states \$1B for Midwest hydrogen hub. Will we lead on clean energy?

The Midwest Hub, known as MachH2, is one of seven across the country that will produce hydrogen as a fuel source for the region's industrial and...

3 weeks ago





Advanced
ENERGY



Sustainable
DESTINATION
Development



**INDUSTRY INNOVATION &
CREATIVE CULTURE**



Opportunity
CAMPUSES



Investment Ready
ASSETS

READI 2.0

REGIONAL ECONOMIC ACCELERATION
& DEVELOPMENT INITIATIVE

\$45 Million READI 2.0 Award

25 Projects

\$1.9 Billion of cash investment

Billions of dollars of generational impact

Duneland YMCA Healthy Living Campus

\$20M- Chesterton



The Palace Theater \$36M- Gary



C. 1ST THRU 4TH FLOOR

SITE		MULTIFAMILY					
Acreage	0.46	Units	69	1 Beds	35	51% Efficiency	80.0%
FAR	3.44	Beds	87	2 Beds	18	26% Height	50.0
DU/AC	150.6	Baths	87.0	Studios	16	23% Average	795
		Stalls Req.	69				

PALACE THEATER DEVELOPMENT PILOT - FORMER MALL SPACE



Marvella Sports Leadership Complex

\$40M- Fair Oaks



RIVER FRONT APARTMENTS

MICHIGAN CITY, IN
A MODULAR CONCEPT

Singing Sands
\$90M





Public Sphere Projects* is a national planning and placemaking consultancy. We advise place managers on the visioning, strategy, and stewardship of shared urban places through an uncompromising commitment to the values of justice and joy.



The Lakeview Low-Line in Chicago, Illinois. Image by PORT Urbanism.

Let's build a movement.

Public Sphere Projects believes that public places can be more just and joyous, better resourced and loved.

hello@publicsphereprojects.com

Public Sphere Projects



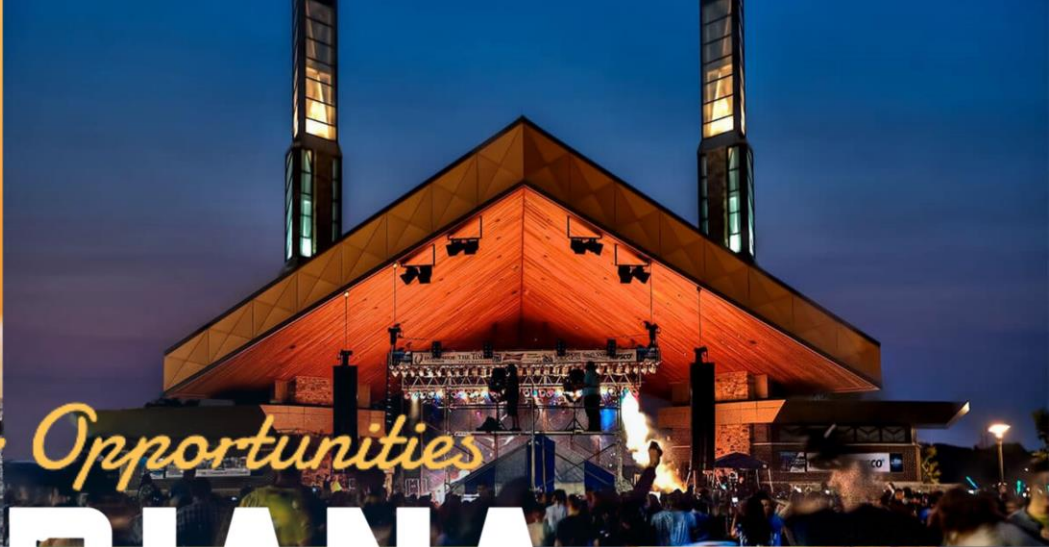
hello@publicsphereprojects.com
publicsphereprojects.com



GO

NWMI

GREATER OPPORTUNITIES



Greater Opportunities

IN INDIANA

